



# Hatfield Community Free School

To inspire, enrich and nurture so  
each individual reaches their  
full potential





“Education is the  
foundation upon which  
we build our future”



“Senior leaders have created a safe, caring and supportive school which enables pupils to thrive”

Ofsted 2014



All schools have their own distinctive ‘feel’ which makes them unique. It is often commented upon, by visitors to our school, how a friendly, caring and supportive atmosphere encompasses them from the moment they enter our environment. We believe that every child deserves the very best from each moment they are in school with us and we focus relentlessly on providing this on a daily basis. This is made possible by all members of the school community endeavoring to create an environment that is conducive to the holistic growth of each individual within it.

Everyone at Hatfield Community Free School is immensely proud of our school. It is a vibrant and innovative place to learn and thrives on setting high standards in all aspects of the lives of our

children due to teachers consistently teaching lessons that interest, excite and inspire children to learn across the whole school curriculum and beyond. In addition, we take great pride in being an inclusive school, where the voice of each child and family is heard and continually strive to achieve high quality communication for all.

I am delighted to provide you, within this prospectus, a glimpse into the fantastic work that takes place at Hatfield Community Free School and share with you some of the opportunities that are provided to all within the school community. I hope reading this will enthuse you to discover more about our wonderful school.

**Mrs Victoria Hobson**  
Principal



“Pupils’  
behaviour is  
impeccable.  
They thoroughly  
enjoy school  
and are keen to  
do well”

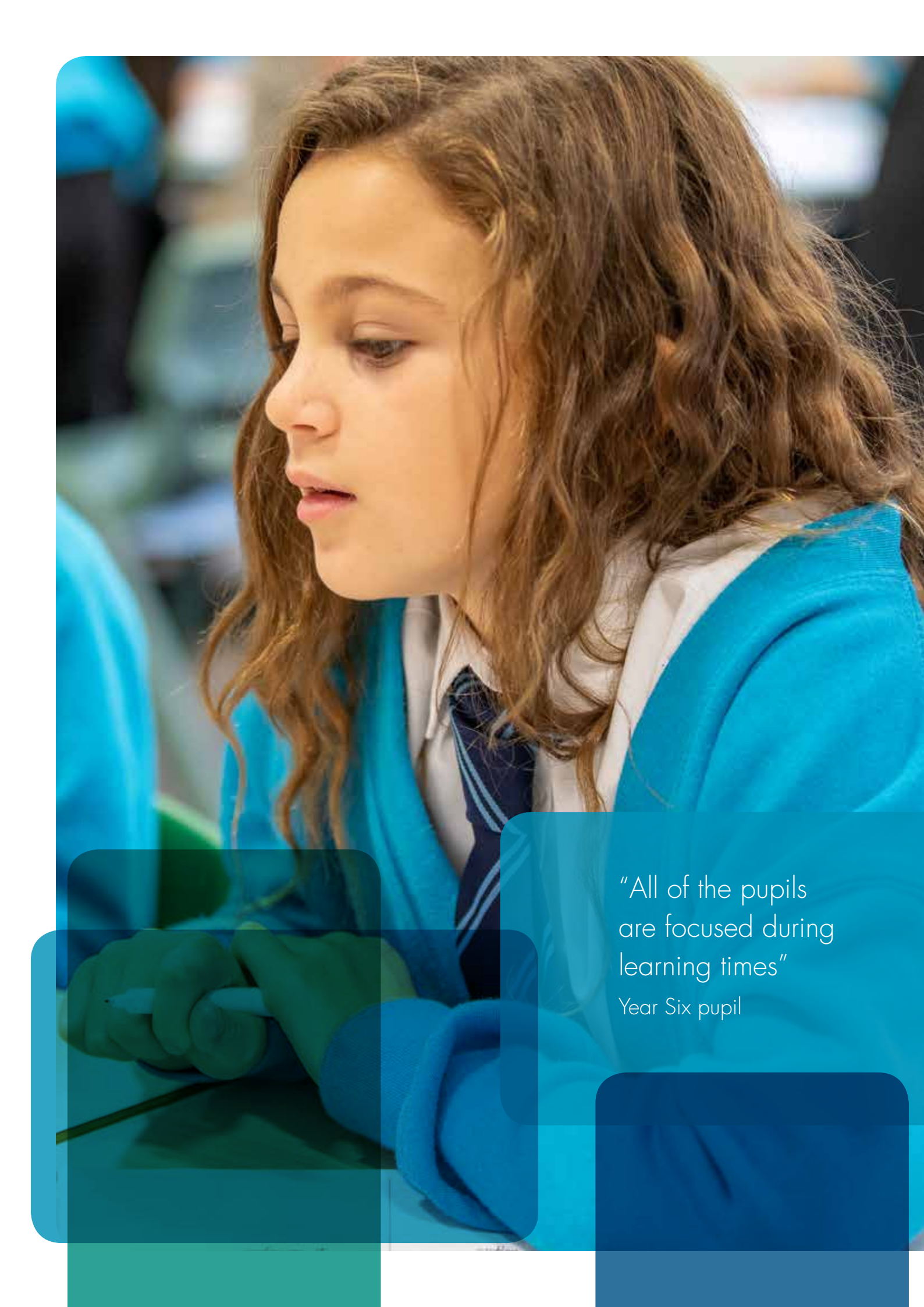
Ofsted 2014

At Hatfield Community Free School, we believe every member of our school community deserves the best from each moment they are with us. We do this so that our mission of inspiring, enriching and nurturing the lives of our pupils to enable them to reach their full potential can become a reality. The individual child is central to our approach. We ensure everyone has access to broad and balanced teaching and learning experiences, as well as nurturing environments, which prepares them to be happy and confident citizens as well as life-long learners.

We place an emphasis on six core values that we believe to be important in the creation of free thinking, curious, resilient and conscientious members of society. We work tirelessly on building and nurturing respectful relationships and use the Thrive® Approach to prepare our children for life’s emotional ups and downs. All cultures, faiths and beliefs are valued at HCFS creating an understanding that all human beings should be treated equally and inclusively.

---





"All of the pupils  
are focused during  
learning times"

Year Six pupil



“The school gives the pupils opportunities which support and help with their overall development”  
Year Six parent



“There are specific times each day for us to talk about our feelings”

Year Five pupil



Let's help every child  
**thrive**

In 2018 the Thrive Approach® was introduced at Hatfield Community Free School to promote children's positive mental health and well-being. The approach supports adults to know how to be and what to do in response to children's differing and sometimes distressed behaviour. It also supports the development and building of strong, respectful relationships that help children to flourish and learn.

Schools using the Thrive Approach® comment on how implementing it as a whole school approach closes the gap for vulnerable children across a range of measures including attainment, behaviour, relationships, self-confidence and attendance and also helps to build children's resilience levels.

The use of the approach at Hatfield Community Free School is geared towards addressing the needs of all children, not just the vulnerable, and enabling social and emotional developmental support at the 'right-time' for individuals. It allows reparative interventions to be provided for children with unmet needs from earlier in their development and makes individuals aware that their feelings and views are valued.

Thrive® enables adults to identify children who are most vulnerable to stress and ensures practical strategies for working with them in a targeted way are implemented to help them cope better with life both inside and outside of school through the self-regulation of their own emotions and behaviours.



“I love school because of the teaching, I wouldn't know this much without it”

Year Two pupil

Our curriculum is designed to reflect our aim of providing each child with the skills and knowledge they need to reach their full potential and to also meet the requirements of the National Curriculum.

As children begin their education journey with us, we place emphasis on developing their fundamental skills in reading, writing and mathematics as these skills are the foundations on which other academic learning can be built upon. This is achieved through providing rich, imaginative and creative learning experiences which makes learning fun and exciting.

The Senior Leadership Team has developed a broad and balanced curriculum which provides the children with many exciting

opportunities to learn in a range of meaningful contexts both inside and outside of school. The curriculum is regularly reviewed by the Senior Leadership Team and Subject Leaders to ensure it is highly tailored to the children and families of Hatfield Community Free School. The reviews are completed through action research within the classrooms and self-reflection by the teachers in relation to the development needed for themselves and the children they work with.

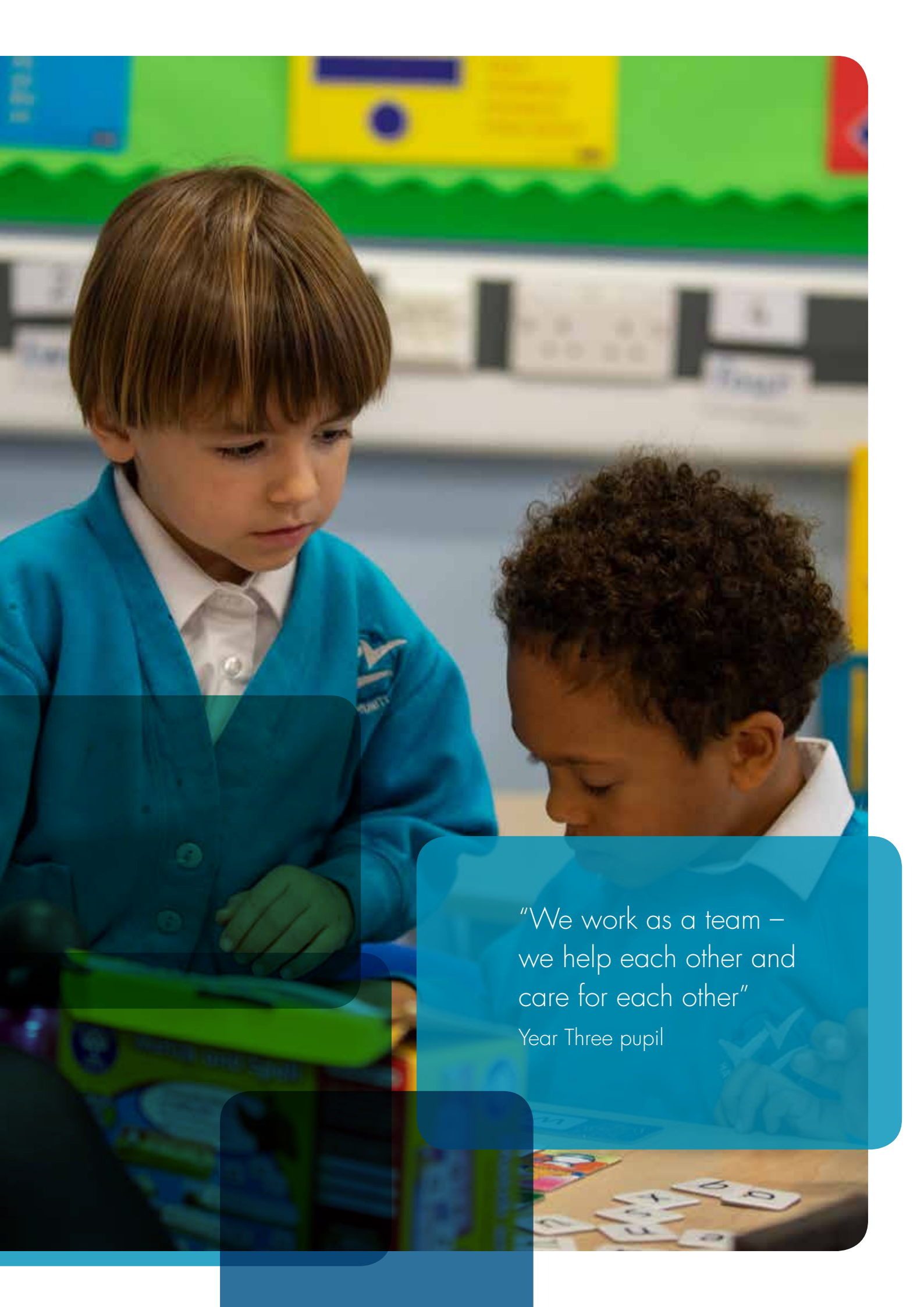
The learning experiences provided to the children allow for academic growth but also foster the talents and diverse characteristics they have which leaves them equipped and empowered as they move forwards into the next stage of their learning journey.





"We all help each other and are like a family"

Year Two pupil



"We work as a team –  
we help each other and  
care for each other"

Year Three pupil



“We have a large, vast building with amazing facilities for us to all use”

Year Six pupil



Hatfield Community Free School is housed in a purpose built building constructed in 2012. It is equipped with a wide range of resources, which over time have been chosen by the children, for the children, enabling the enhancement of learning experiences.

We are proud to offer smaller class sizes of 20 pupils for children entering our school in Reception and Year One. This unique organisation allows us to get to know each child at an individual level and create relationships and learning provisions that cater for their individual needs allowing them to flourish.

Computing is taught weekly in every year group and we have the availability for all children to access a range of different technologies regularly so they are prepared and equipped for the technological world we live in.

Provision for the working family has been considered with Energy Kidz offering daily wrap around care in a new extension to our school building. Energy Kidz operate flexibly for families who need access to childcare before and after the core school day and also offer holiday childcare on some occasions.

We have recently unveiled our brand new MUGA facility which comprises of a multisport surface area containing a five a side football pitch and two netball courts on premium artificial grass. The new state of the art facility allows safe usage for physical education activities and play in all weather conditions.



“The children are respectful and this respect is returned by the adults”

Year Six Pupil

We pride ourselves in the opportunities we have in place for all children to share their views and have their voice heard within school. As a school community, we believe that allowing children to participate, contribute and influence life in our school leads to increased levels of engagement and the building of stronger relationships.

One child commented that because adults in school listen to everyone’s views and hear things from a range of perspectives, children in school feel like equals and no one is more superior than anyone else.

When the children reach their final year of schooling with us, they are provided with the opportunity to

be elected into the role of Senior Pupil Leaders. The 14 elected candidates work closely with the Senior Leadership Team to lead on development points and provide support across all of the classes in the school. The Senior Pupil Leaders are given the chance to develop relationships with a range of peers and act as a pupil representative so that the views, feelings and opinions of all members of our community are heard.

Our Senior Pupil Leaders comment that they enjoy being there for the children that need them, they feel empowered to do their very best to make school the finest place it can be and also want to ensure that no one feels left behind.





"The teachers help me  
learning something new  
every day"

Year Five pupil



We are consistently oversubscribed with four applications for each place in EYFS in 2020

Hatfield Community Free School is a primary school welcoming 60 children as a new Reception cohort each academic year. The one point of entry to the cohort occurs at the beginning of the autumn term and applications are made via the Local Authority.

If there are fewer applications made than places available, all applicants will be offered a place. If however there are more applications than places available, a set criteria for allocation is followed. A detailed explanation of the admissions criteria and arrangements can be found on the school website.



Hatfield Community Free School,  
Briars Lane,  
Hatfield,  
Hertfordshire,  
AL10 8ES

Tel: 01707 276018

[office@hcfs.org.uk](mailto:office@hcfs.org.uk)

[www.hcfs.org.uk](http://www.hcfs.org.uk)



A young person with dark, curly hair is shown in profile, looking down at a book. They are wearing a dark school uniform with a white shirt and a striped tie. The background is blurred, showing a yellow and red banner with some text. The image is overlaid with several semi-transparent blue and teal shapes.

"Learning is a treasure  
that will follow its  
owner everywhere"

# Hatfield Community Free School

Hatfield Community Free School,  
Briars Lane, Hatfield,  
Hertfordshire, AL10 8ES

Tel: 01707 276018  
office@hcfs.org.uk

[www.hcfs.org.uk](http://www.hcfs.org.uk)

